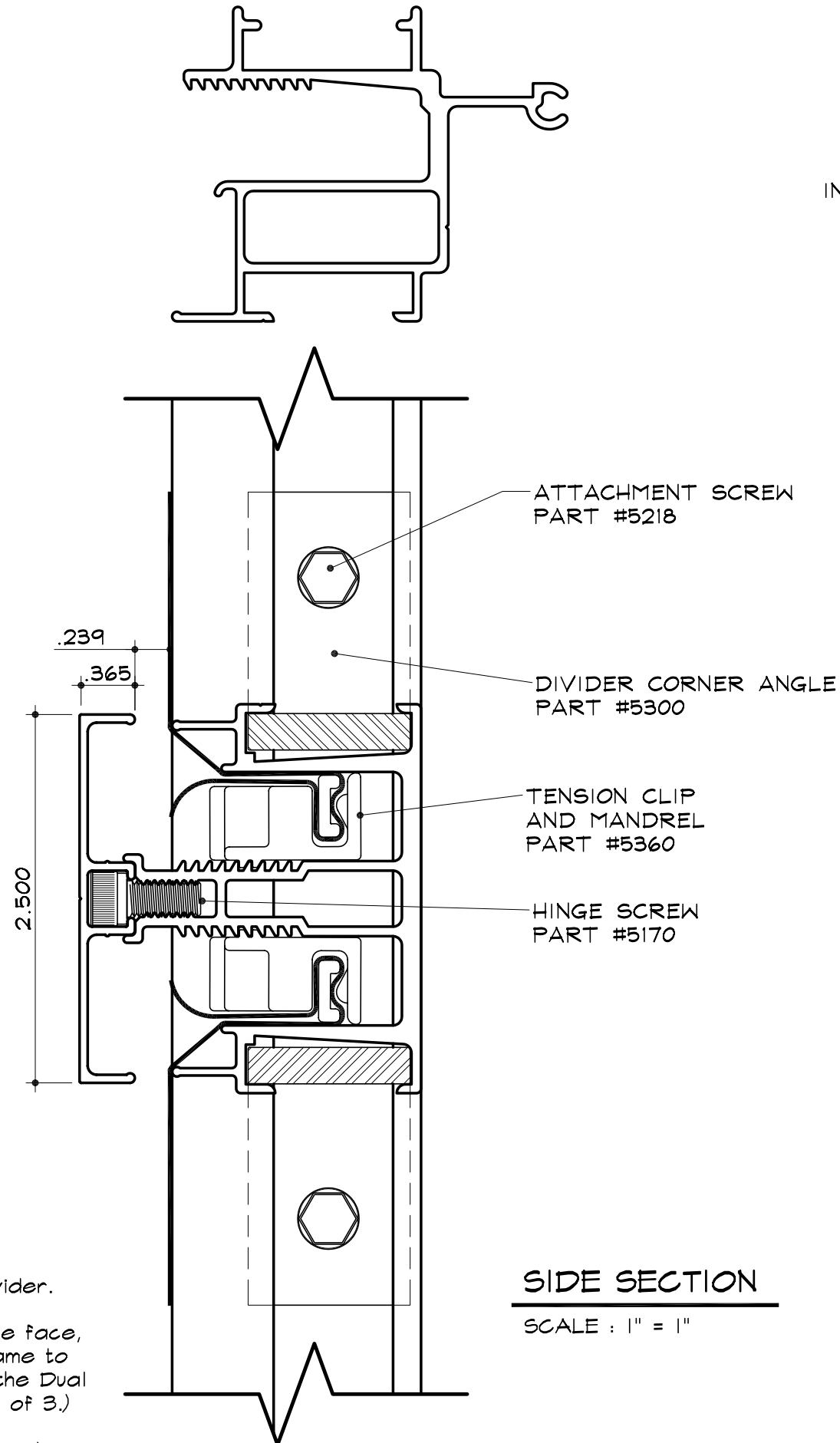


SC-37 for Flex Faces

Dual Divider
Part #2142

Dual Divider Cover
Part #2146



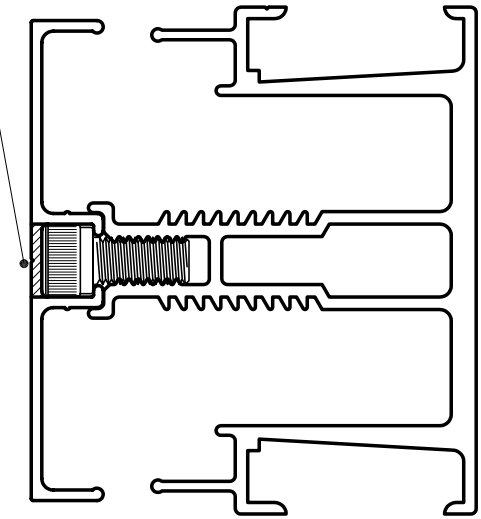
SIDE SECTION

SCALE : 1" = 1"

NOTES:

1. - Deduct 4½" from overall height or width to get cut length of Dual Divider.
2. - When using Dual Divider for flexible face, cut away a portion of the Dual Frame to facilitate a smooth transition into the Dual Frame. (See Detail "A" on sheet 2 of 3.)
3. - For use with Dual Frame (Part #2065) and 2" Retro (Part #2105) ONLY.

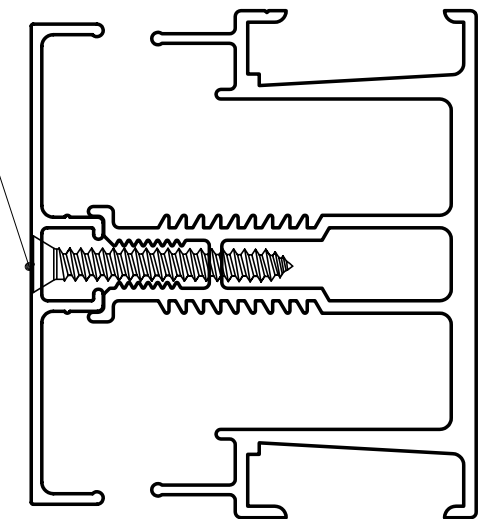
DRILL 3/8" HOLE EVERY 36" ON CENTER FOR INERTION OF HINGE SCREW TO FASTEN COVER.



OPTION "B" COVER ATTACHMENT

SCALE : 1" = 1"

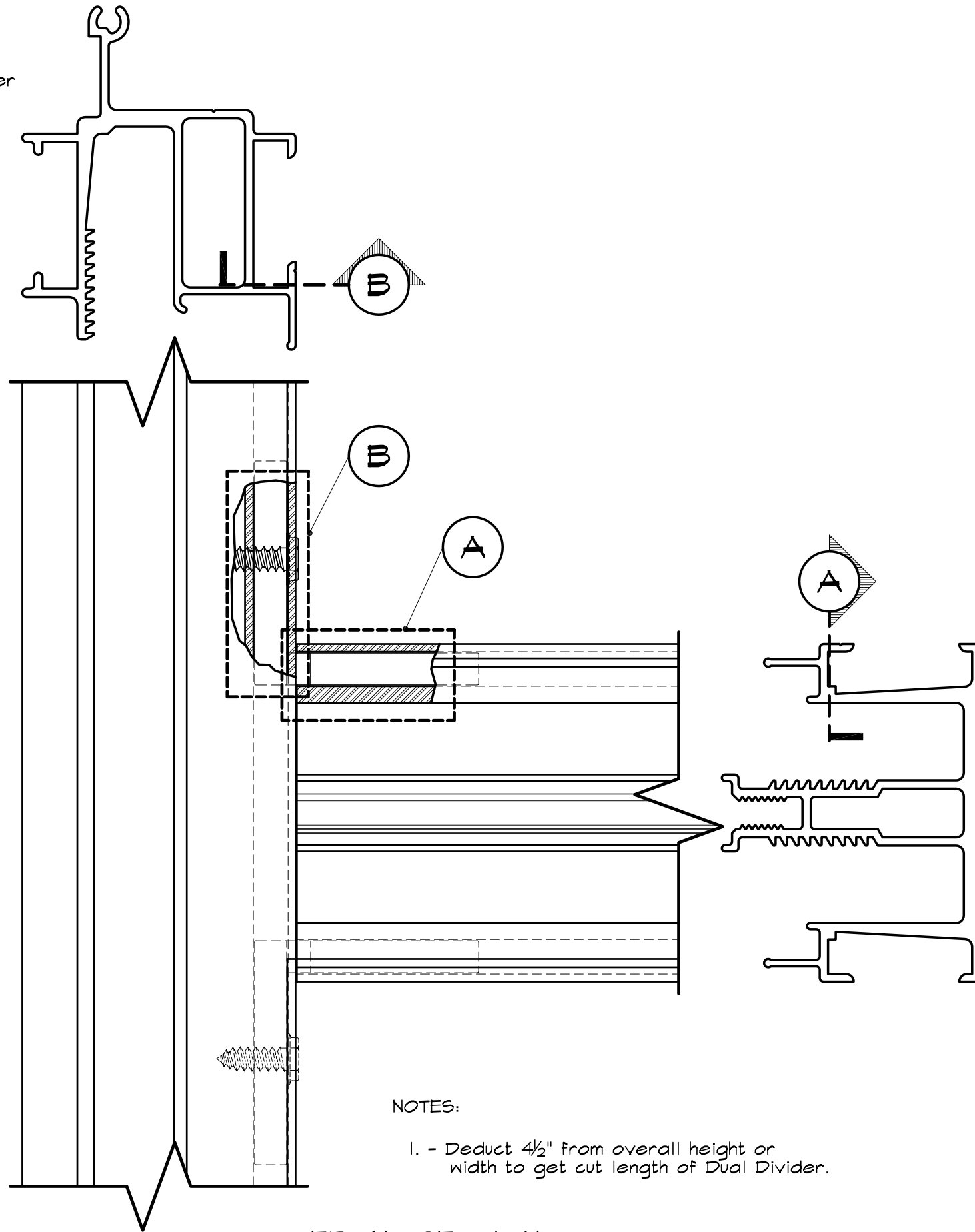
#8x2¼" COUNTER SUNK SCREW



OPTION "C" COVER ATTACHMENT

SCALE : 1" = 1"

SC-37 for Flex Faces
 Dual Divider
 Part #2142
 Dual Divider Cover
 Part #2146

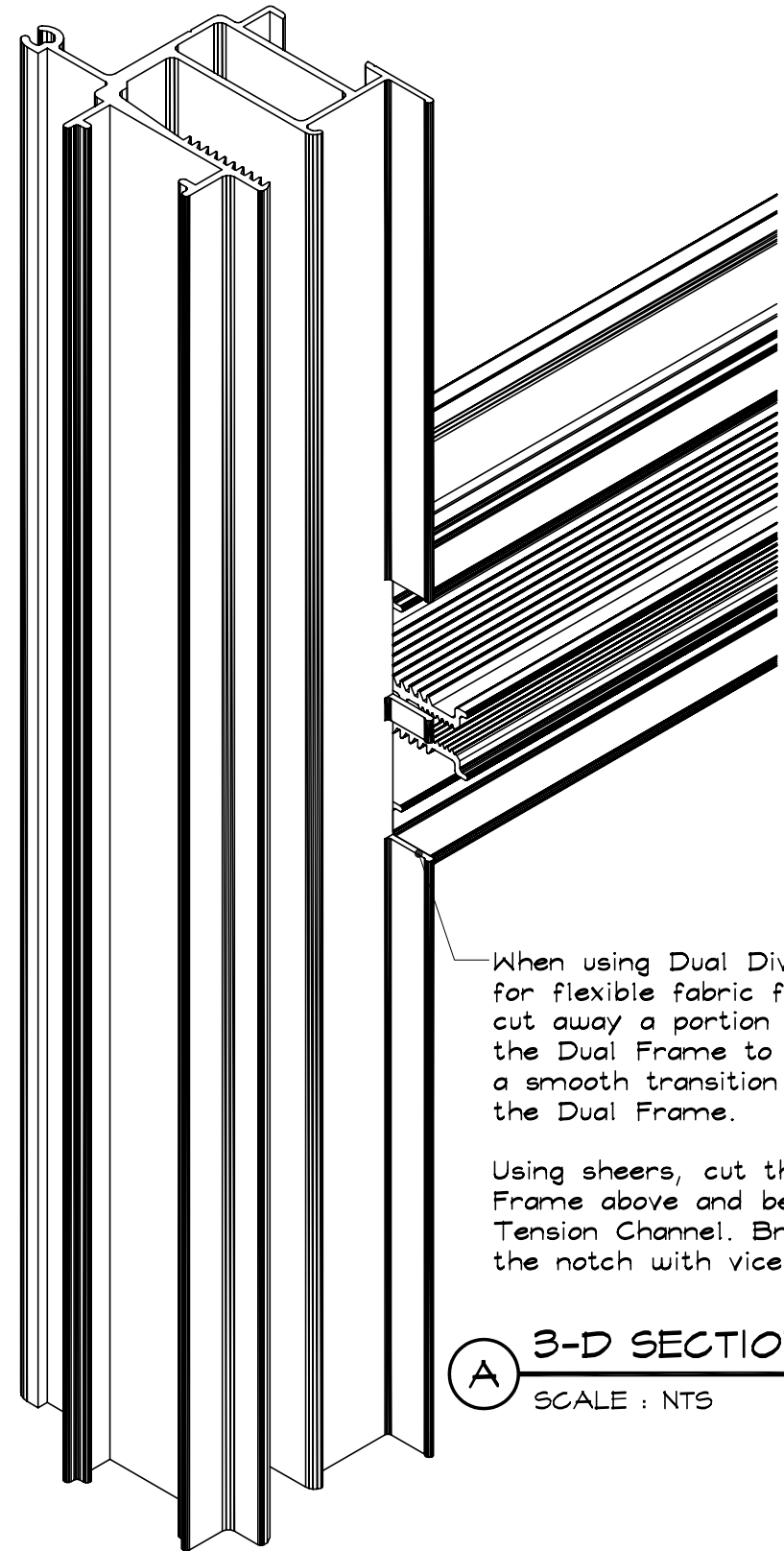


NOTES:

1. - Deduct 4½" from overall height or width to get cut length of Dual Divider.

FRONT SECTION

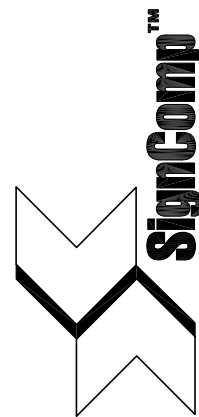
SCALE : 1" = 1"



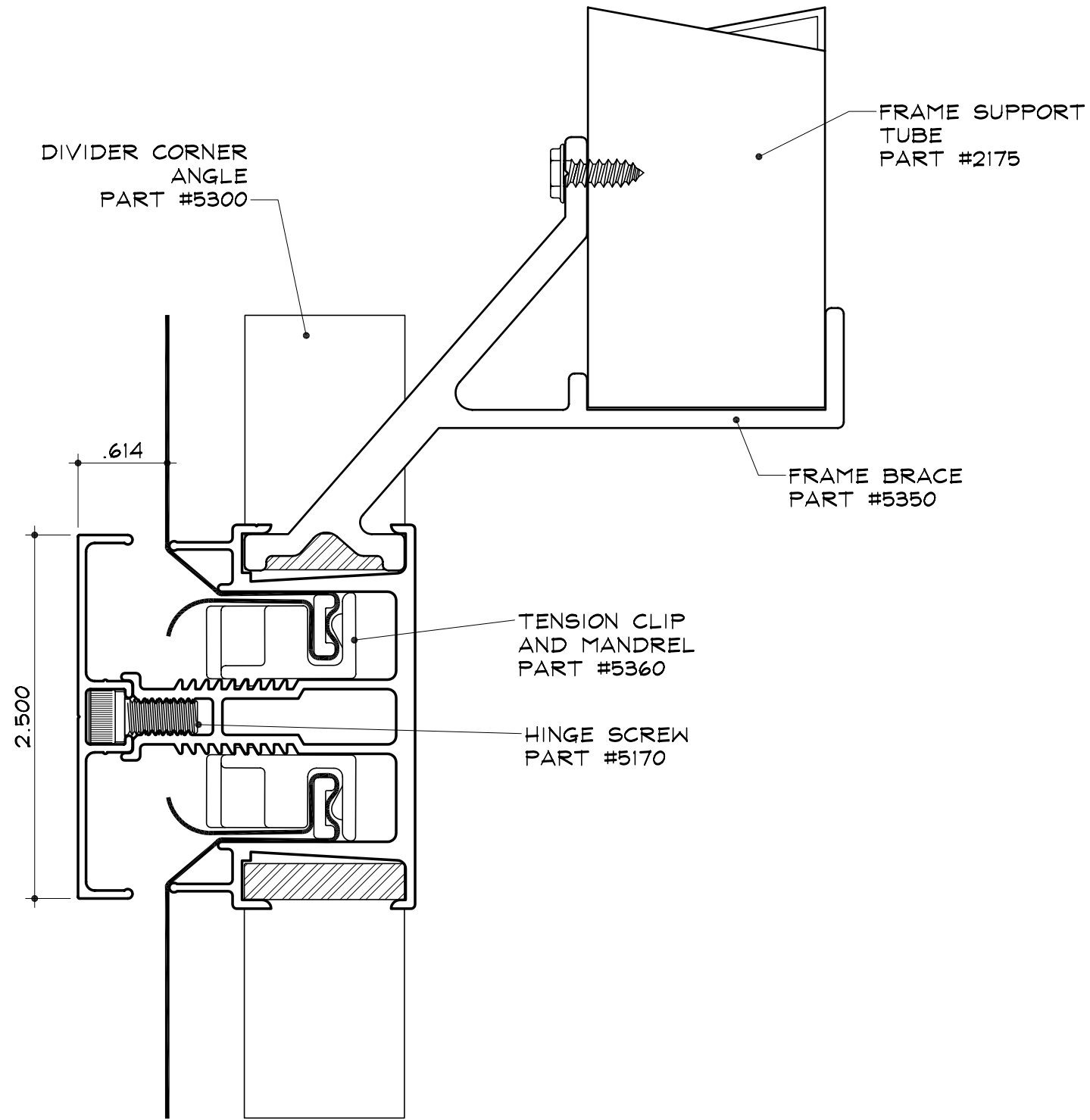
When using Dual Divider for flexible fabric face, cut away a portion of the Dual Frame to facilitate a smooth transition into the Dual Frame.

Using sheers, cut the Dual Frame above and below the Tension Channel. Break away the notch with vice grips.

A 3-D SECTION
 SCALE : NTS



SC-37 for Flex Faces
Dual Divider
Part #2142
Dual Divider Cover
Part #2146



NOTES:

1. - Deduct 4 1/2" from overall height or width to get cut length of Dual Divider.
2. - When using Dual Divider for flexible face, cut away a portion of the Dual Frame to facilitate a smooth transition into the Dual Frame. (See Detail "A" on sheet 2 of 3.)
3. - For use with Dual Frame (Part #2065) and 2" Retro (Part #2105) ONLY.

SECTION DETAIL

SCALE : 1" = 1"